



PDspect

INSPECTION SOFTWARE

Step by Step

How To

Modify Components

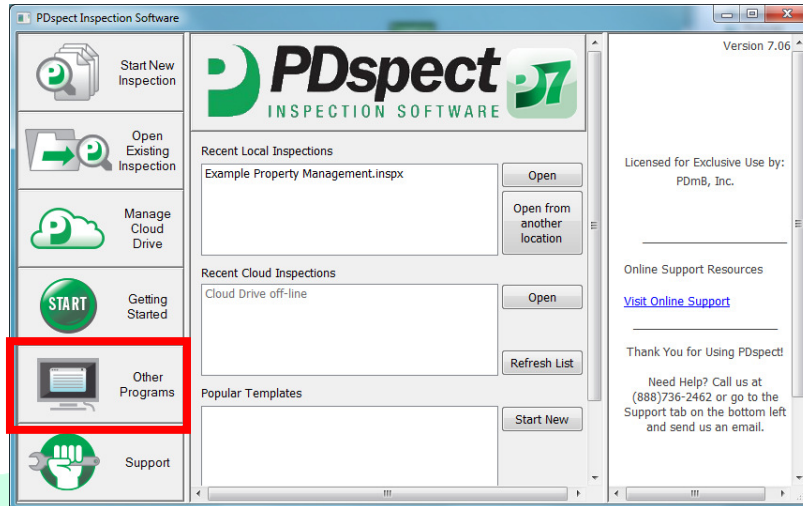
This How To article explains how to modify components.

For a complete list of available How To documents visit the
Support section of our website: <http://www.pdspect.com/support/index.php>

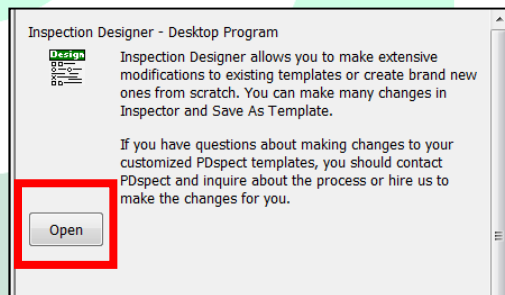
HOW TO: MODIFY COMPONENTS

This document will show you how to modify components. A component is a grouping of lines that make up an area/section that can be repeated multiple times such as bedroom or bathroom. Components are contained in the library file so if you make changes to your components and you want to move the changes to another device you'll need to transfer your library to that device.

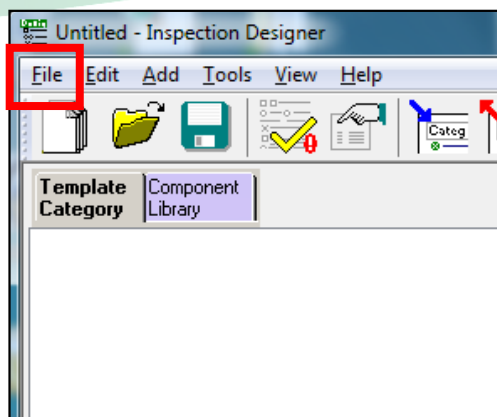
1. First, open your PDspect icon and then select 'Other Programs'



2. Next, click 'Open' under Inspection Designer.

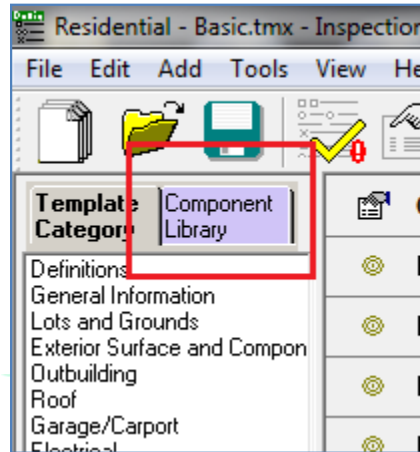


3. Now open the template file that you want to modify by going to File->Open. Click on the template you want to change, and once it is highlighted click on OK.



HOW TO: MODIFY COMPONENTS

4. Switch from the Template Category to the Component Library so that we can see our component list.



5. On the left hand side of the screen we will see a list of our components instead of a list of our categories. Click on the component you want to modify.
6. You'll now see the individual line and pieces that make up the component. From here you can make the desired changes such as adding lines, deleting lines, rearranging the order, etc. For more information on how to perform these tasks, see the other How To documents.

